

REAR SHOCK ABSORBER

4RIDE



MONTESA 4RIDE EXTREM



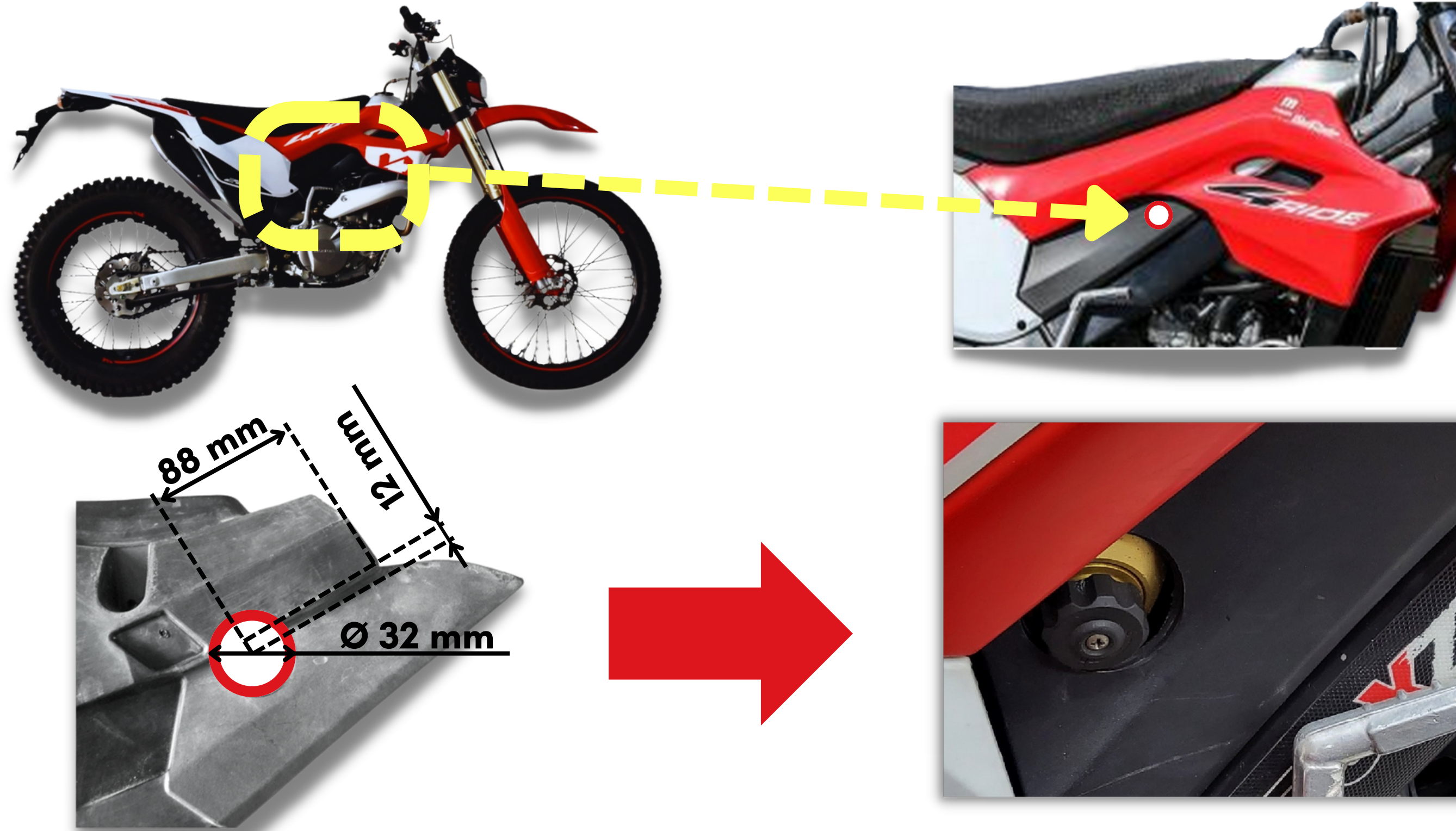
MONTESA 4RIDE STD



ZEROPROJECT

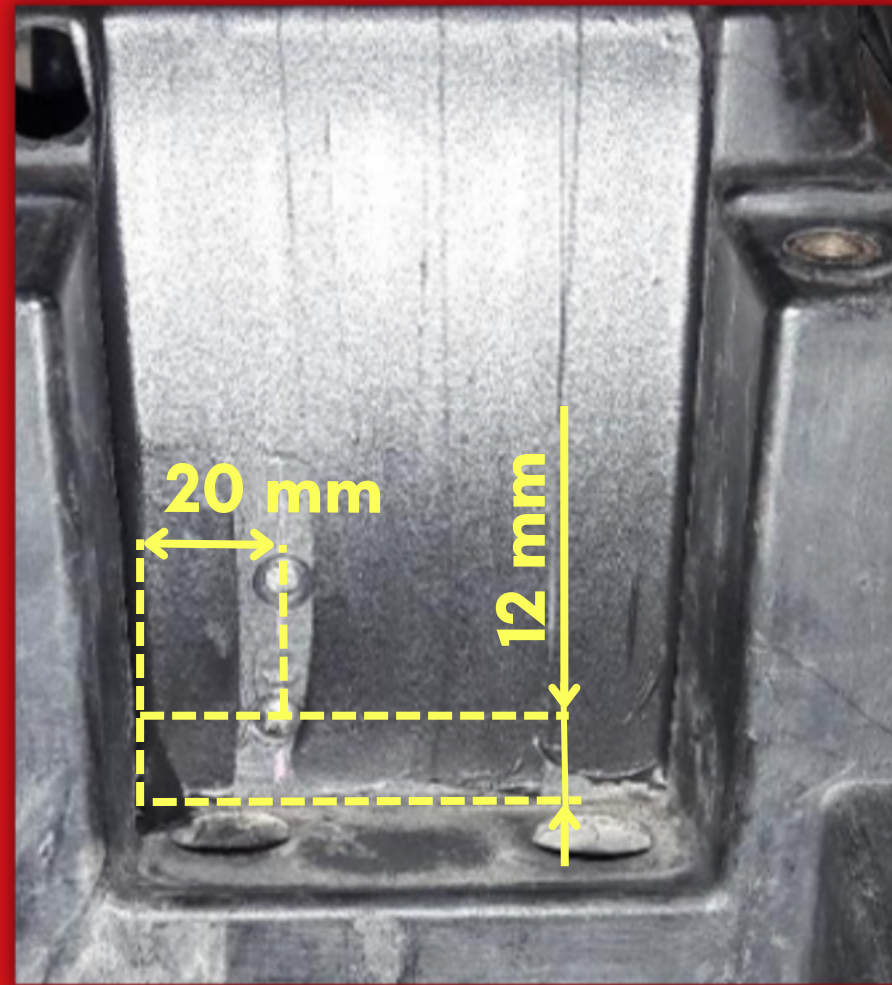
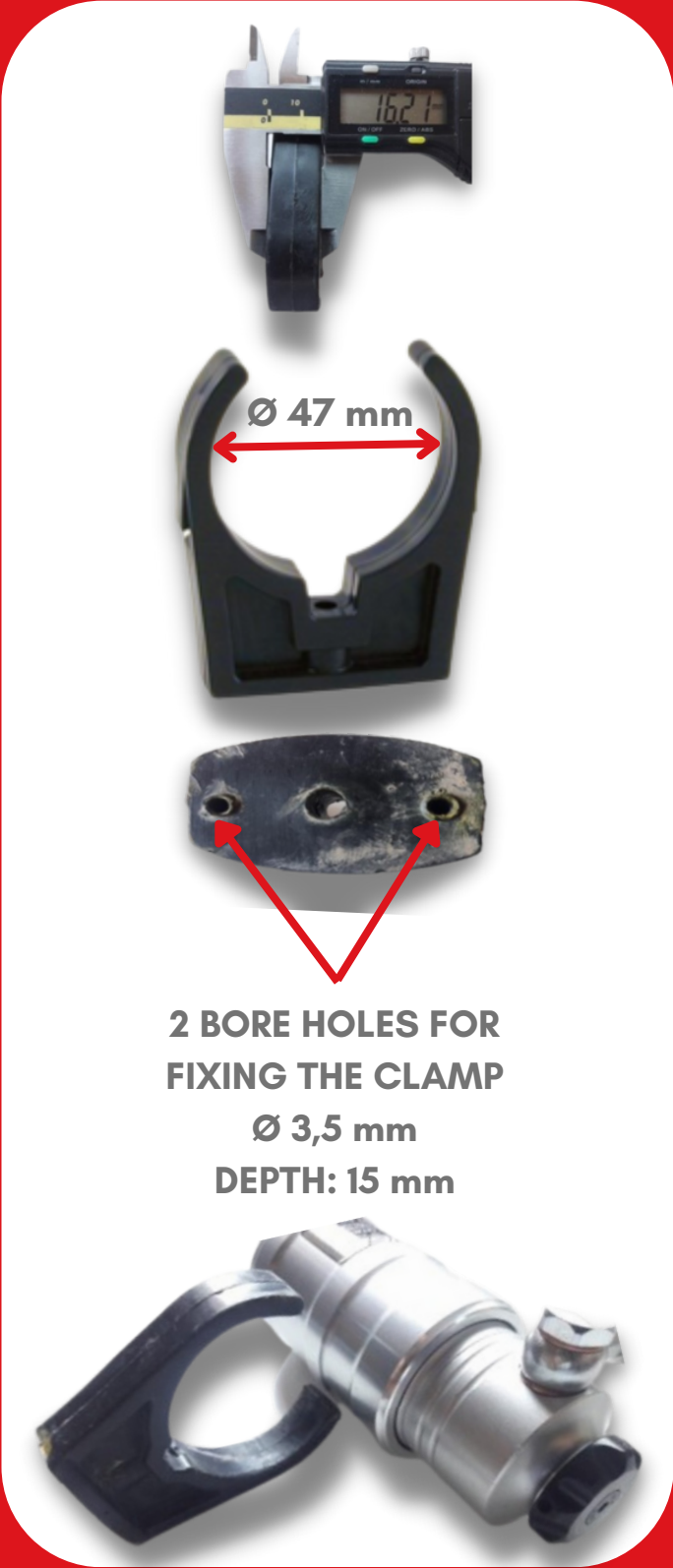
OPTION 1: STANDARD STARTER SYSTEM

- MAKE A 32 mm DIAMETER BORE HOLE TO ACCESS THE SUSPENSION ADJUSTMENT.



OPTION 1: STANDARD STARTER SYSTEM

FIXING REAR SHOCK ABSORBER EXPANSION BOTTLE.



DRILL 2 HOLES FOR FIXING THE REAR SHOCK ABSORBER EXPANSION BOTTLE CLAMP.
 $\varnothing 5$ mm

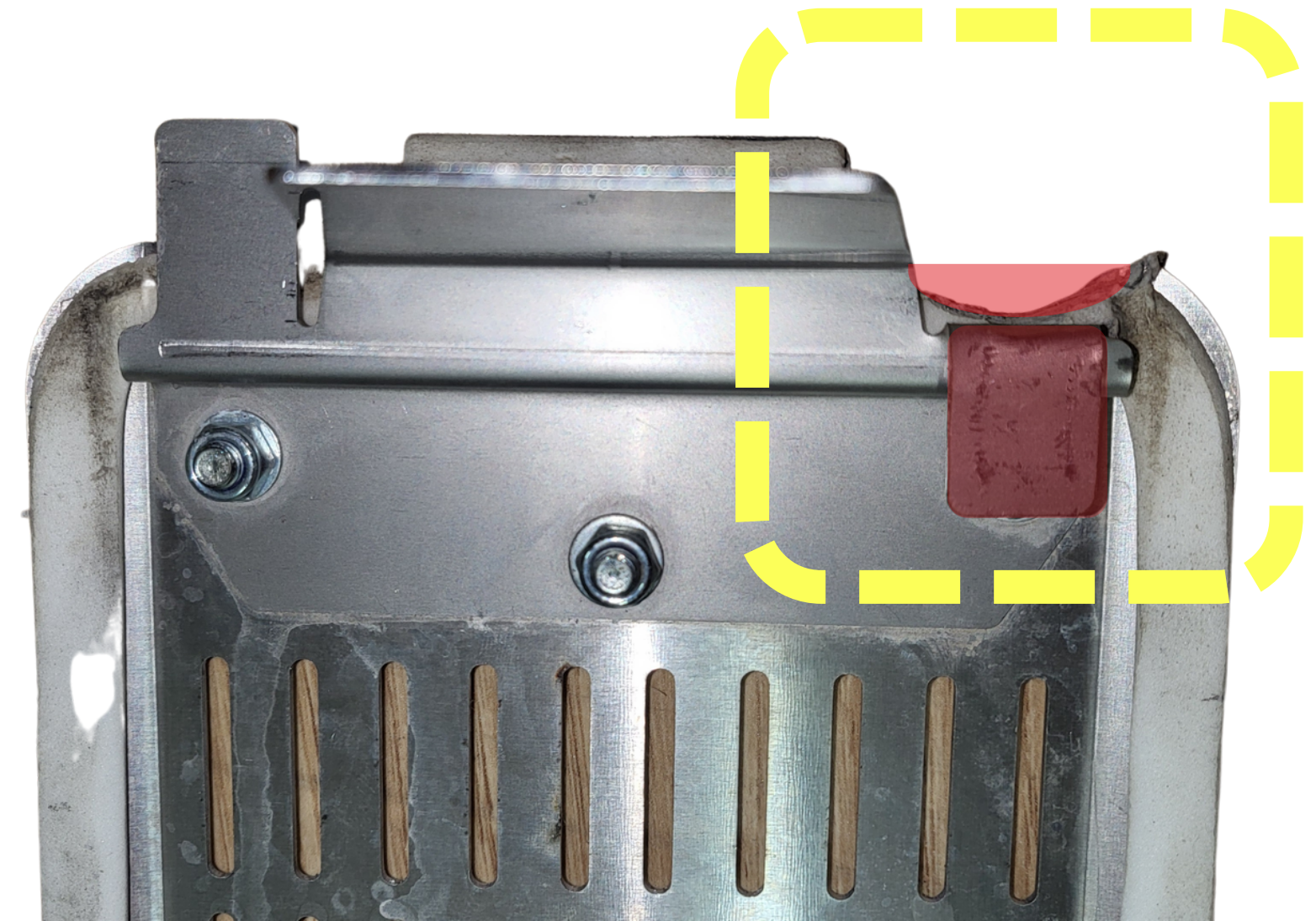


OPTION 1: STANDARD STARTER SYSTEM

- DRILL A HOLE IN THE LOWER PART OF THE BOX TO PASS THE HOSE, AS SHOWN IN THE FOLLOWING IMAGE.
- IT IS ADVISABLE TO INSTALL THE "AIR FILTER ACCESS GRILLE" WHICH YOU CAN FIND ON OUR WEBSITE www.boxzero.net.



Place the hose protection sleeve in the indicated location.



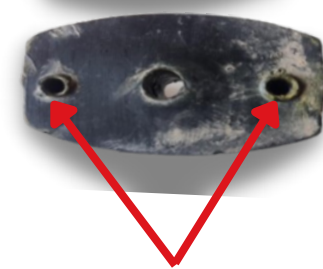
To pass the hose correctly, you must bend the flange and make a material recess in the part at the specific location indicated in the photograph.



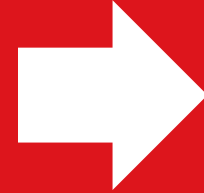
OPTION 2: ELECTRIC STARTER SYSTEM

FIXING REAR SHOCK ABSORBER EXPANSION BOTTLE.

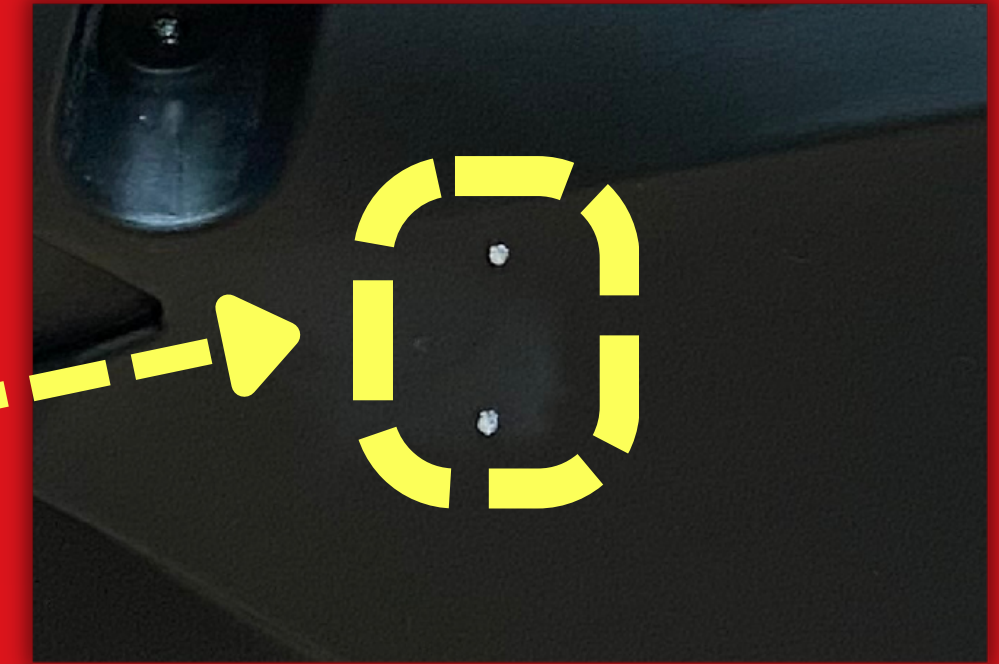
IT IS NOT POSSIBLE TO APPLY THE METHOD OF THE FIRST OPTION, BECAUSE THE AREA WHERE THE CYLINDER IS FIXED IS OCCUPIED BY A BATTERY.



2 BORE HOLES FOR
FIXING THE CLAMP
Ø 3,5 mm
DEPTH: 15 mm



REMOVE THE RED PLASTIC COVER FROM THE BOX.



DRILL 2 HOLES FOR FIXING THE REAR SHOCK
ABSORBER EXPANSION BOTTLE CLAMP.
Ø 5 mm

DRILL THE HOLES IN THE APPROXIMATE LOCATION
SHOWN IN THE PICTURE. FINAL CHOICE OF THE
CUSTOMER ACCORDING TO HIS NEEDS, AS LONG
AS THEY ARE LOCATED WITHIN THE PERIMETER OF
THE IMAGE.

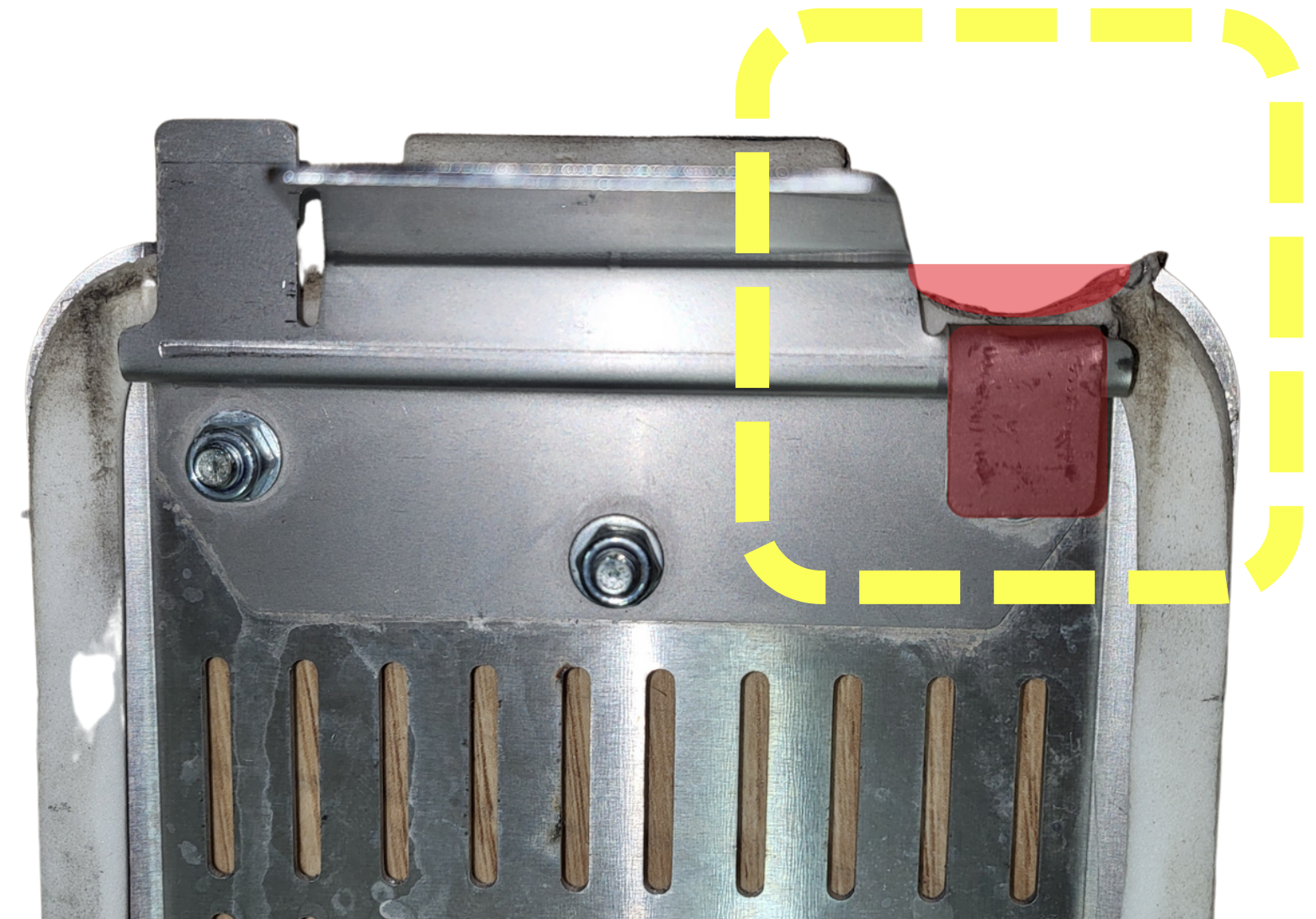


OPTION 2: ELECTRIC STARTER SYSTEM

- DRILL A HOLE IN THE LOWER PART OF THE BOX TO PASS THE HOSE, AS SHOWN IN THE FOLLOWING IMAGE.
 - IT IS ADVISABLE TO INSTALL THE "AIR FILTER ACCESS GRILLE" WHICH YOU CAN FIND ON OUR WEBSITE www.boxzero.net.



Place the hose protection sleeve in the indicated location.

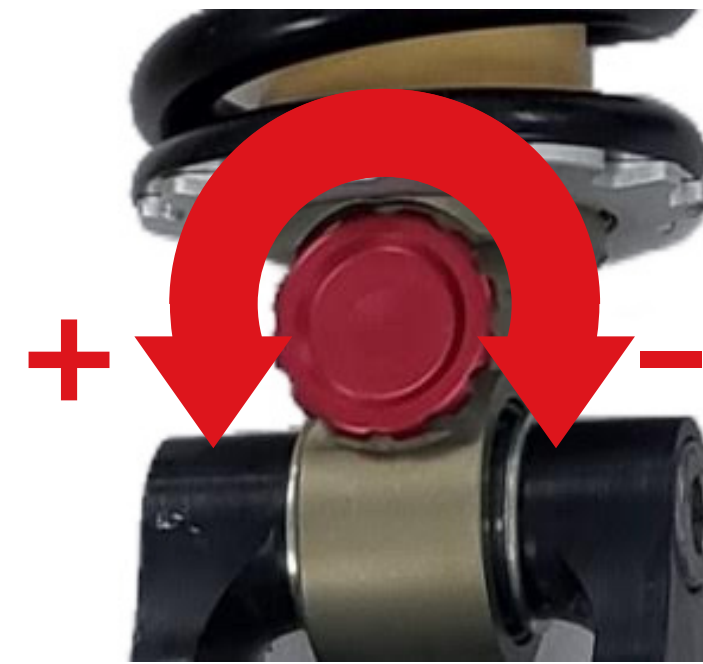


To pass the hose correctly, you must bend the flange and make a material recess in the part at the specific location indicated in the photograph.





The compression of the shock absorber can be adjusted from the lower rear part, through the wheel shown in the picture. This allows you to calibrate the lowering speed of the suspension (S slower and H faster).



You can also adjust the rebound speed of the suspension. To calibrate it you must turn the red wheel as shown in the picture.



THANK YOU FOR YOUR TRUST!

*The images may differ due to the change of a component or reference.
It is recommended that this kit is assembled by a professional.*

FOR MORE INFORMATION: prodecome@prodecomracing.com



ZEROPROJECT



www.boxzero.net